



MXF4mac WORKFLOW GUIDE

AS-11 Suite

referred to the

Specs of the
Digital Production Partnership
(DPP)

UK DPP DELIVERY SPEC
REV.2.1

DPP METADATA APPLICATION
VER.1.0

Introduction to the AS-11 Suite

This guide describes the import and export of AS-11 files for Final Cut Pro X. We assume that the user is familiar with the AMWA Application Specification AS-11, we assume furthermore that the user is familiar with the features and functions of FCP X.

The AS-11 Suite consists functionally of 3 parts:

MXF Import	MXF reader, importer, interpreter and access Plug-In for the QuickTime system framework.
AS-11 Export	Export of AS-11 MXF files according to the Specs of the Digital Production Partnership
AVC-Intra Codec	AVC-Intra Codec to encode and export AVC-Intra

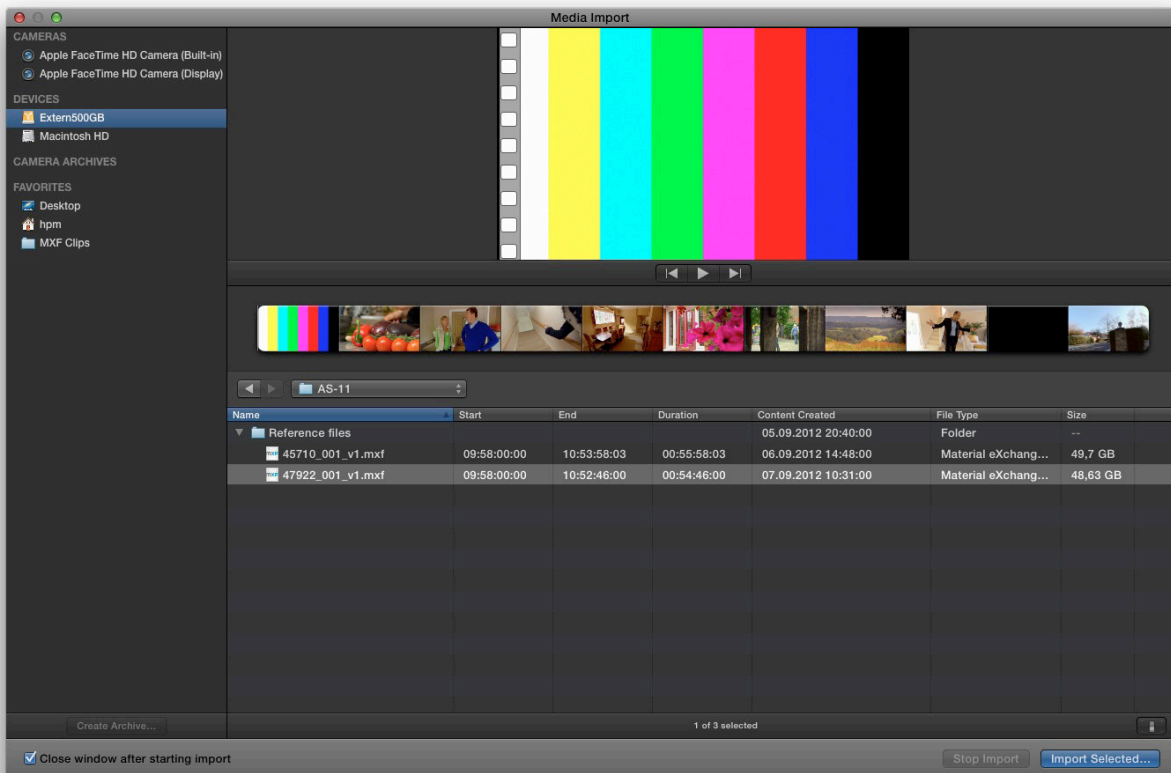
The export of SD IMX files is supported.

Final Cut Pro X project setup for AS-11/DPP

- An AS-11/DPP shim project start-time is always 09:58:00:00
- You have a Filler (e.g. lineup) for the first 90 seconds. This part is called „Filler“
- After the Filler you have a clock with a 30 seconds countdown. This part is called „Clock“
- The programme starts with 10:00:00:00. The start of the programme is called „Programme“

Import of AS-11 clips into Final Cut Pro X

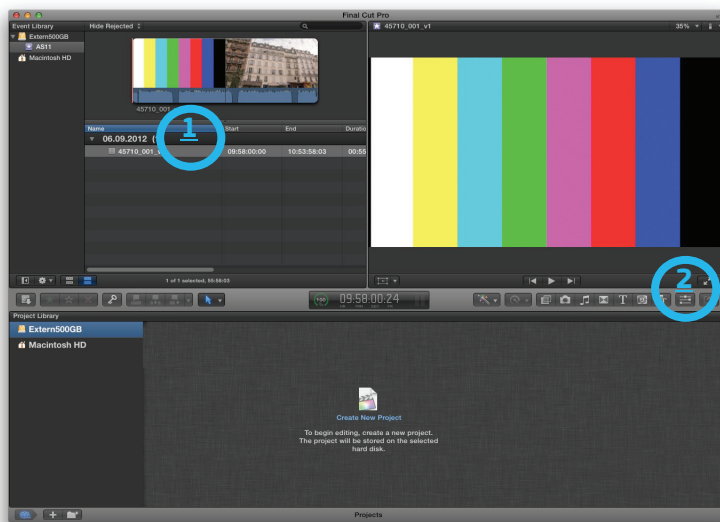
The import of AS-11 MXF files is quite similar to the import of normal QuickTime files. To open or add AS-11 Media into your Event go to the „File“ menu and select „Import-Media“ or press „command - I“ The Final Cut Pro X open dialog windows appears. Your media appears as clips, which link to the media files stored on a disc.



Select the desired file(s) and choose „Import selected....“ or drag & drop the MXF from the Desktop into Final Cut Pro X

AS-11 Import

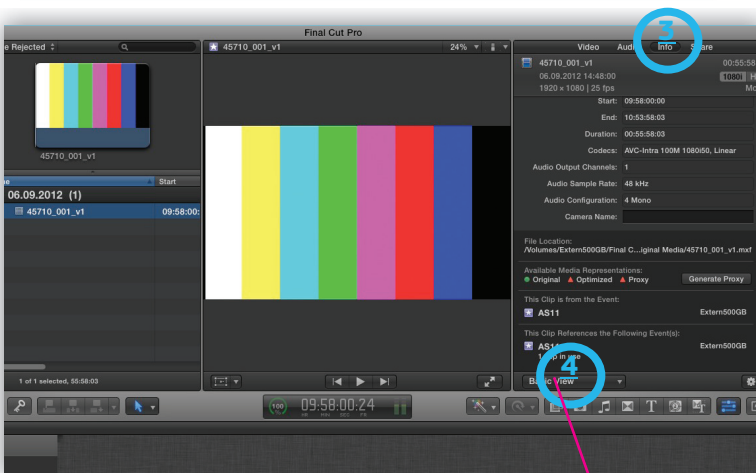
The AS-11 clip(s) show(s) up in your project.



To view the associated AS-11 Metadata, please do the following:

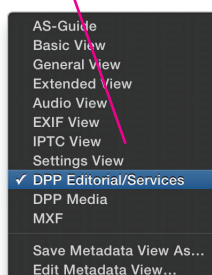
1) highlight the desired (AS-11) clip

2) click the „Inspector“ button



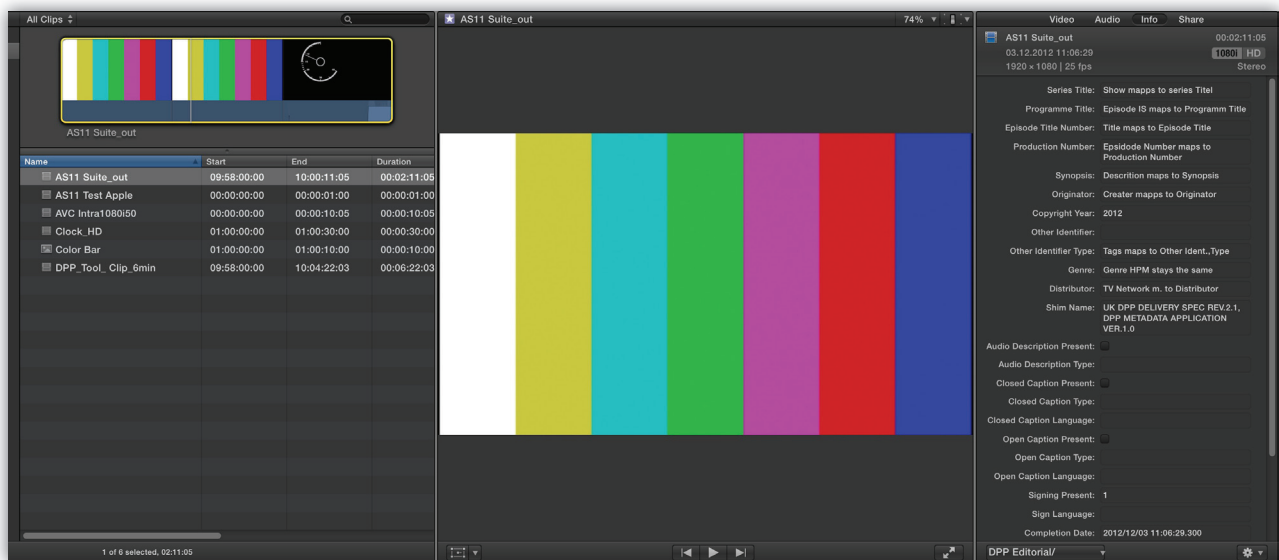
3) click on „info“

4) open the pull-down Menu and choose the desired Metadata view.



AS-11 Import

The Inspector Window now shows the AS-11/DPP Metadata of the selected clip.



DPP Metadata Clip view

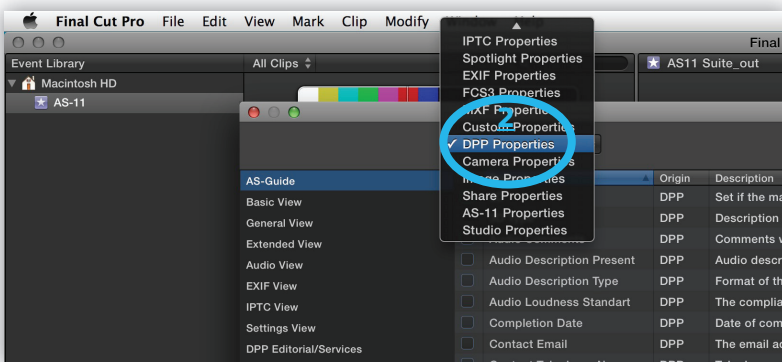
AS-11 Metadata

It is possible to modify the view of the Metadata you like to be displayed.

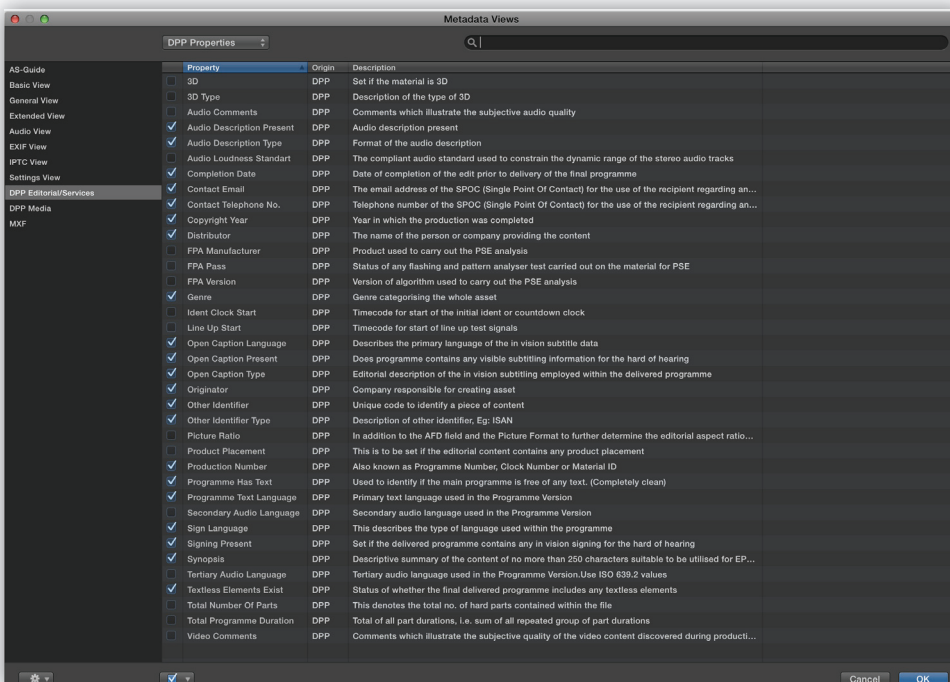
To edit the Metadata view, please click:



1) Choose „Edit Metadata view“



2) Click on „DPP Properties“

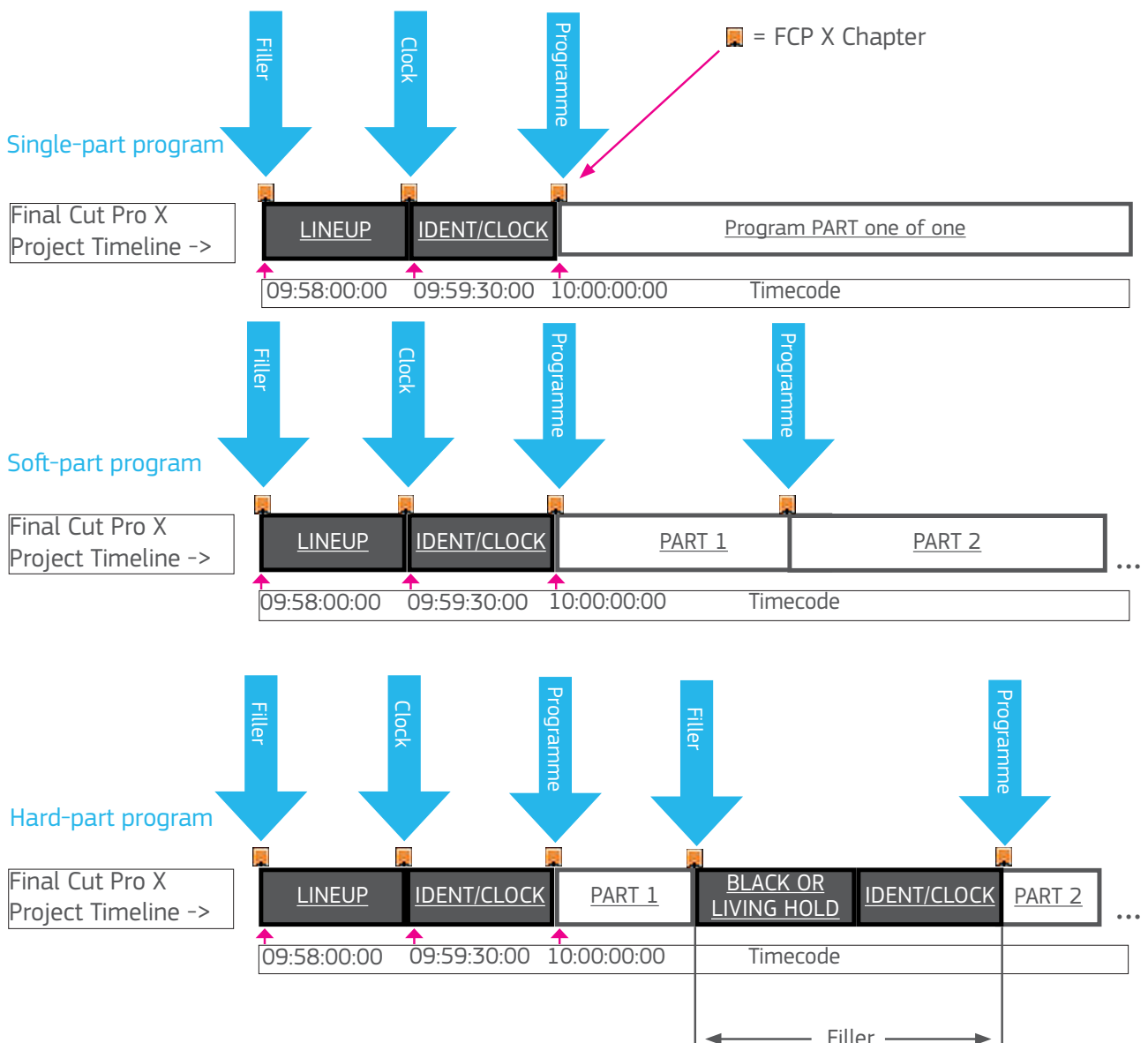


Now you get an overview of the DPP Shim Meta-data with a description of each field

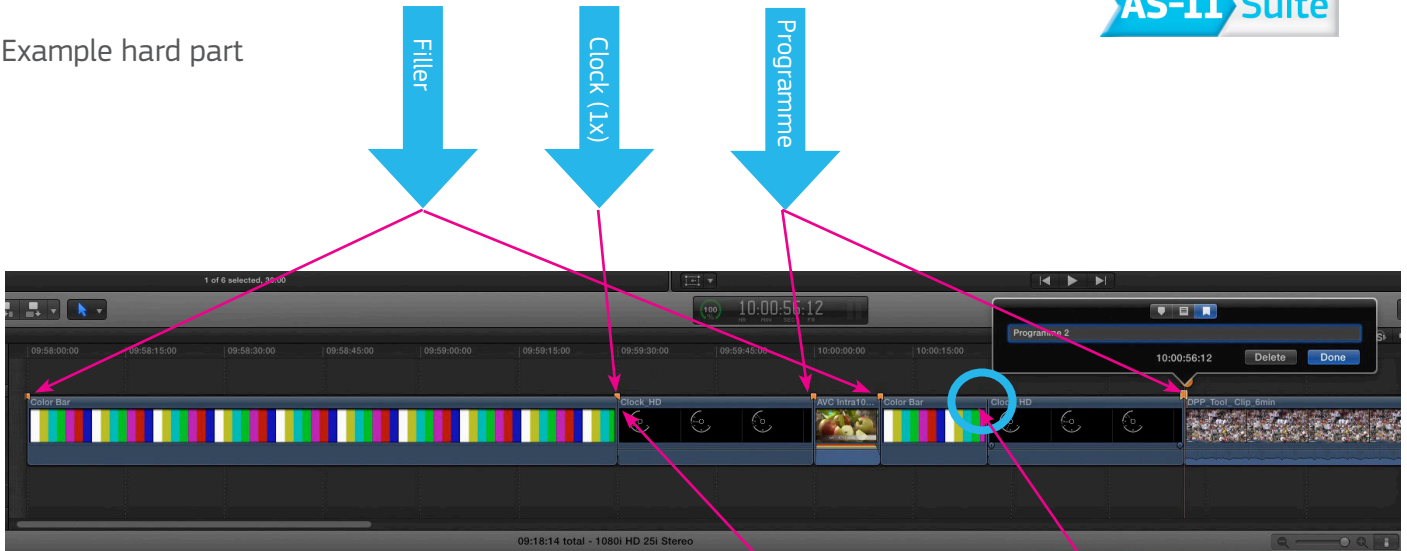
Segmentation - Basics for editing of AS-11 projects in FCP X

AS-11 MXF files are logically divided in different segments. The AS-11 defines 3 different segmentation cases: a single-part program, a soft-parted program, a hard-parted program. All 3 cases are possible and permitted with the DPP Shim

For additional information please read the AMWA Document AMWA_AS-11_10_2012-06-25.PDF, page 14



Example hard part



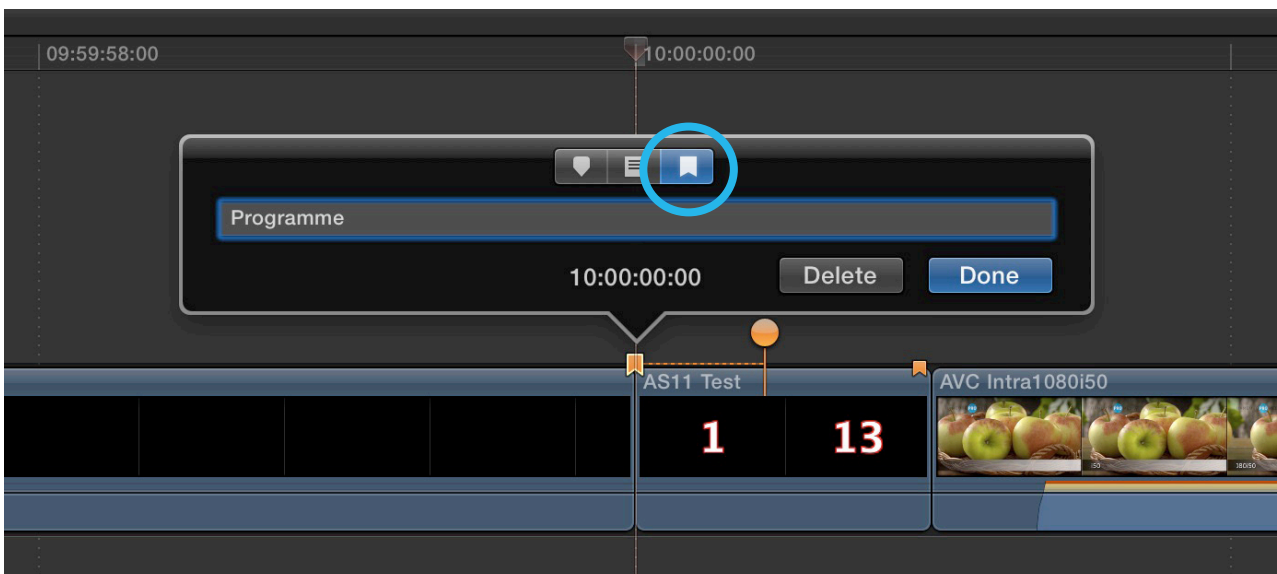
Even the part „clock“ could be used several times, you just set it here: 1x for the „identclock“. NOT here

- in Final Cut Pro X we use chaptermarkers to mark parts.
- The AS-11 Suite differentiate furthermore between „Filler“ and „Clock“
- The names of the markers tell the AS-11 Suite what type of part we have
 - Filler
 - Programme
 - Clock

Please take care of the spelling. It always starts with a capital letter. The words Filler or Programme or Clock are followed by a blank, if yo want to add any further comments

Each part is marked as a chapter as a matter of principle. There are 3 different kind of markers in Final Cut Pro X: „Standard,“ „To do“ and „Chapter“. Always use Chapter for AS-11

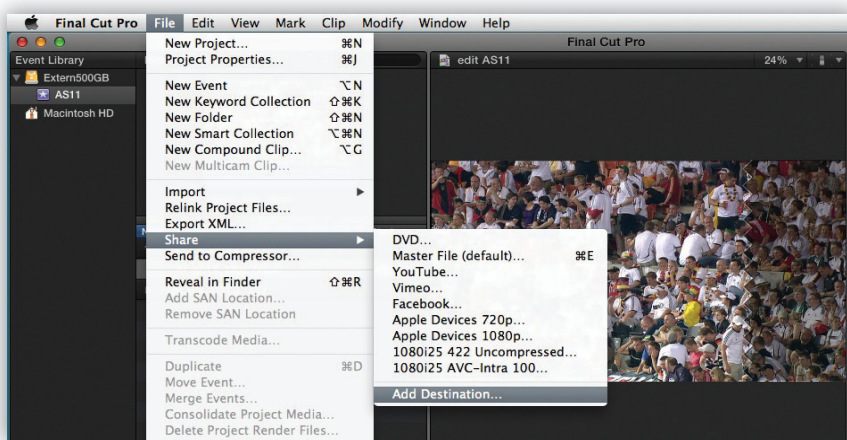
Filler, Clock and Programme are marked as „Chapters“ in Final Cut Pro X.



AS-11 Export from Final Cut Pro X Setting up FCP X for AS-11/DPP export

Note: even if you did not have installed the COMPRESSOR, FCP X-export is processed by the engine of Compressor which is pre-installed and runs as a background task. Although editing of presets is only possible with Compressor.

If you export for the first time, you need to setup Final Cut Pro X:

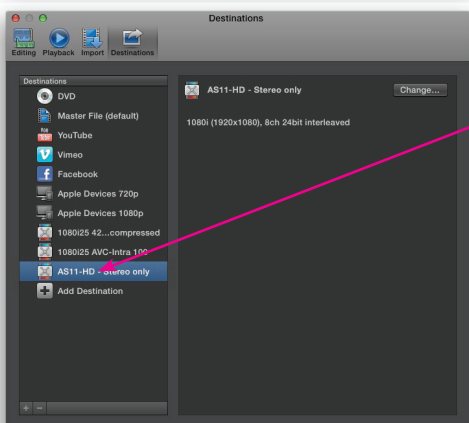
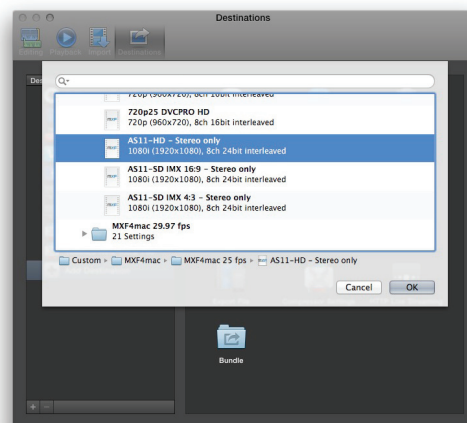


Go to the „File Menu“ and click: „Share“- Add Destination“

Please choose one of the DPP shim presets:

- HD 1080i stereo
- SD IMX 4:3 stereo
- SD IMX 16:9 stereo

To create your own AS-11 setting files, you need Apple's Compressor



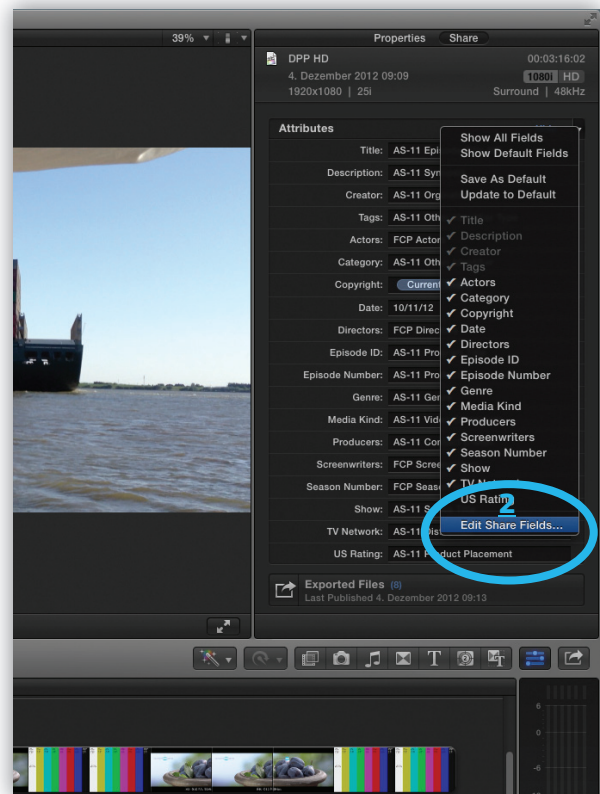
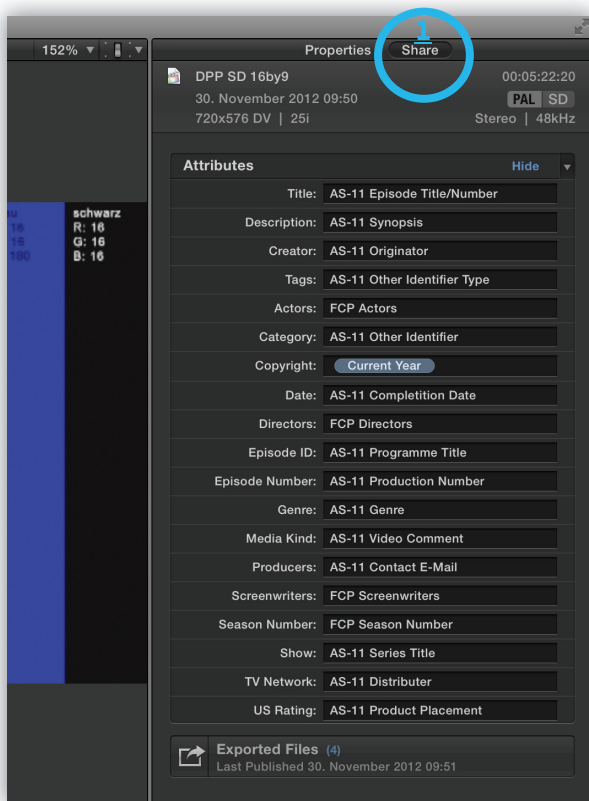
Your new AS-11 HD setting shows up in the Destination window and with it in the Share Menu.

Now the FCP X setup for AS-11 HD export is complete. Please repeat the previous steps for the other two SD settings if required.

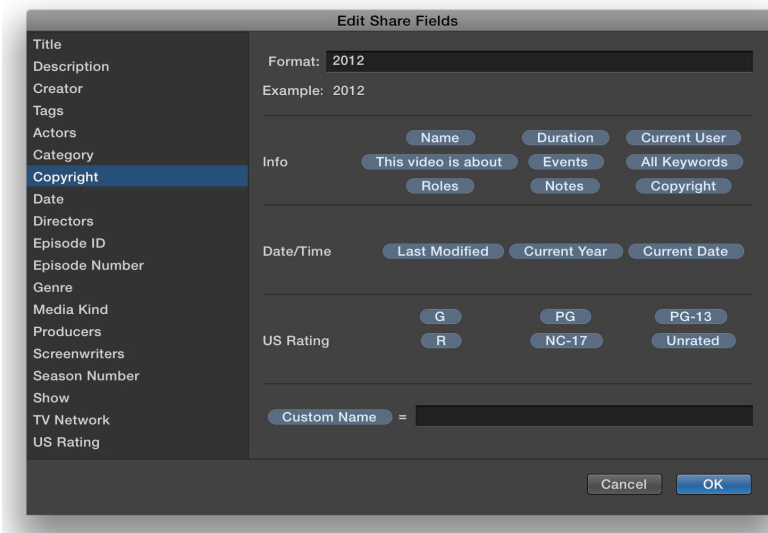
Setting up Export Metadata - Modify share attributes

To view your project Metadata, select this project and click „share“ in the inspector window (1)

You can view and modify share attributes (Metadata) in the Share inspector. (2)



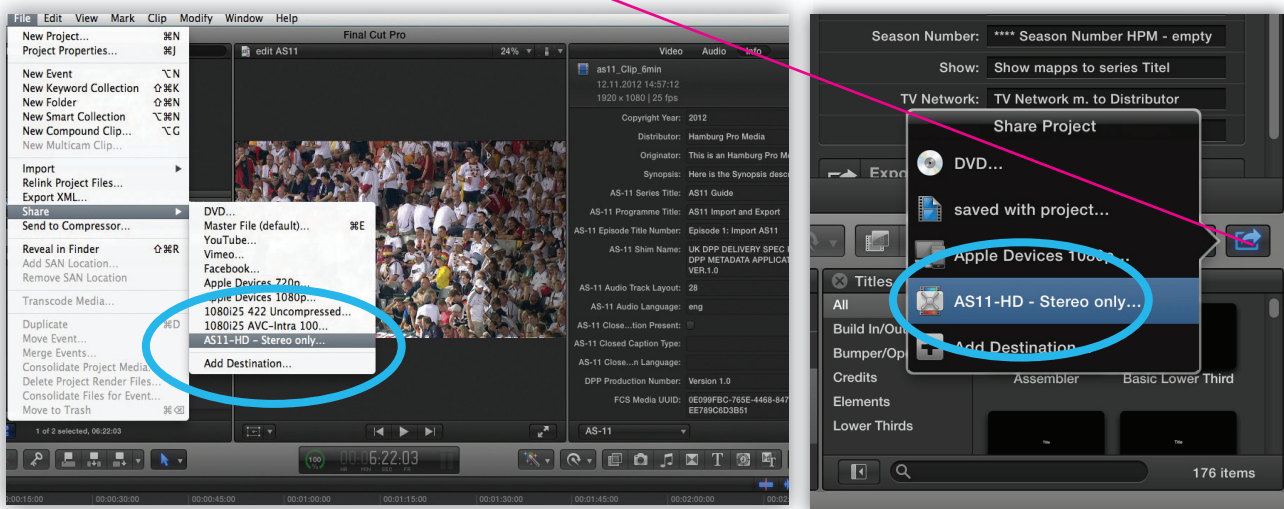
Modify and complete your Metadata:



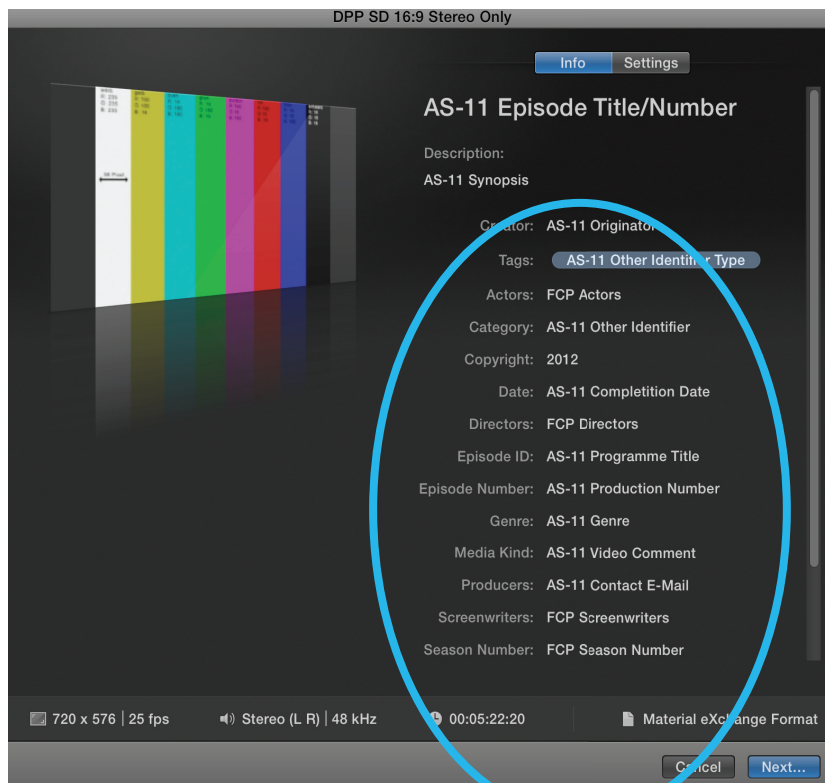
For the correct and complete Metadata mapping please refer to the table at page 13

AS-11 Export from Final Cut Pro X

To initiate the export process, activate your desired project and select the previously defined DPP Compressor setting. Alternatively click the share function in the inspector window.

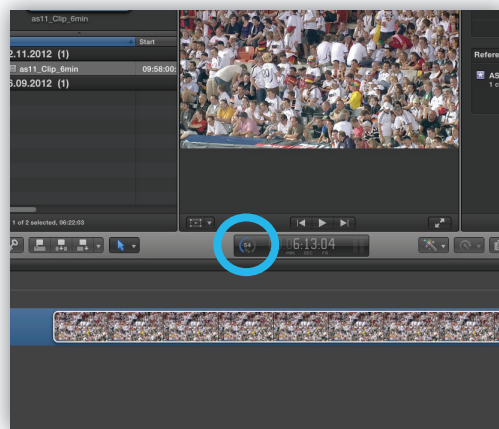
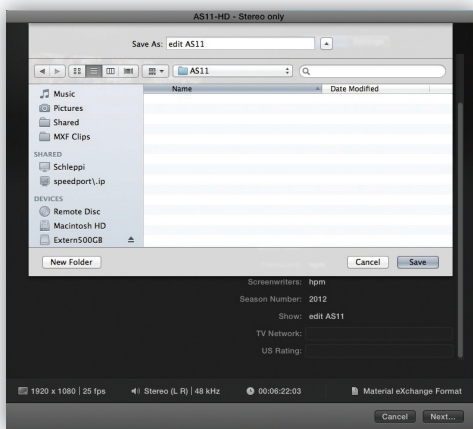


The export window is coming up. If necessary modify the Metadata, then click „Next...“



AS-11 Export from Final Cut Pro X

Choose a name and click „save“ to start the (background) export.



Watch the progress display counting to 100%

Note:

AS-11 defines a minimal core metadata set required in all AS-11 files, a program segmentation metadata scheme. It permits inclusion of custom shim-specific metadata in the MXF file. The AS-Suite includes at the moment the DPP Shim.

The AS-11 Suite exports currently MXF files according to the Specs of the Digital Production Partnership (DPP): UK DPP DELIVERY SPEC REV.2.1, DPP METADATA APPLICATION VER.1.0. Additional versions are under future development.

Some notes for Metadata mapping in Final Cut Pro X

- At the moment you can not use clip metadata for your project, you can just view it
- Since we use the FCP X share field names for the DPP Metadata, some names do not correspond yet. In the following list, you can see how some FCP X field names are mapped to the DPP Metadata field designation:

FCPX Description	AS-11 Field
Actors	
Category	Other Identifier
Copyright	Copyright Year (only Number)
Creator	Originator
Date	Completion Date
Description	Synopsis
Directors	
Episode ID	Program Title
Episode Number	Production Number
Genre	Genre
Media Kind	Video Comments
Producers	Contact E-Mail
Screen Writer	Audio Comments
Season Number	Contact Telephone No.
Show	Series Title
Tags	Other Identifier Type
Title	Episode Title
TV Network	Distributor
US Rating	Product Placement

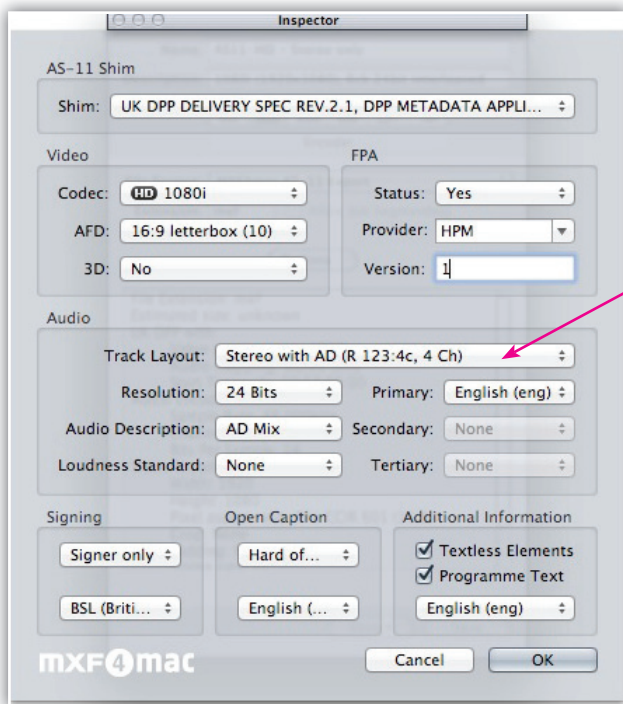
We can not present all DPP Metadata fields in FCP X. And it is even not necessary. Some structurally Metadata is automatically provided through the FCP X project parameters, so the AS-11 Suite takes care of these. There are the DDP **Descriptive** Metadata fields, which are mandatory and can modified with FCP X. These are:

- Series Title
- Programme Title
- Episode Title
- Production Number
- Synopsis
- Originator
- Copyright Year
- Other Identifier
- Genre
- Distributor



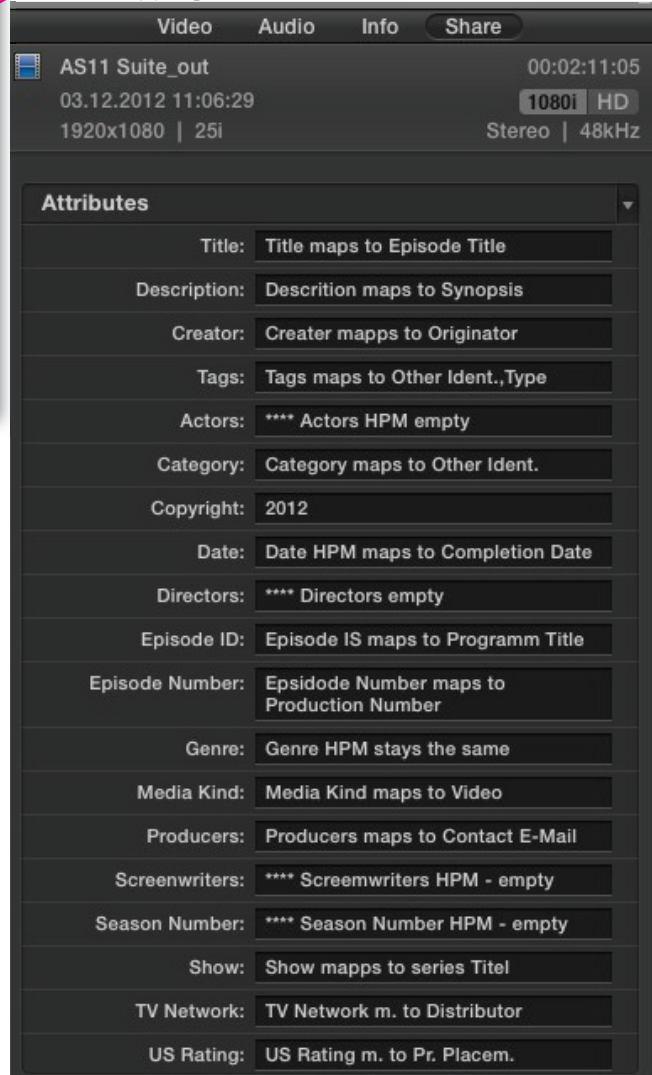
Metadata mapping in Final Cut Pro X

Other mandatory fields are to be set into the Compressor and stored in the setting file. During the export, the AS-11 Suite reads this Metadata and writes it into the MXF and the sidcar XML



- Stereo Only (R 48:2a, 2 Ch)
- Stereo with M&E (R 123:4b, 4 Ch)
- Stereo with AD (R 123:4c, 4 Ch)
- ✓ 5.1 with M&E (R 123:16c, 16 Ch)
- 5.1 with AD (R 123:16c, 16 Ch)
- 5.1 Dual Language (R 123:16d, 16 Ch)
- Triple Language (R 123:16f, 16 Ch)

A final mapping could look like this in Final Cut Pro X:



Compressor Setting editor