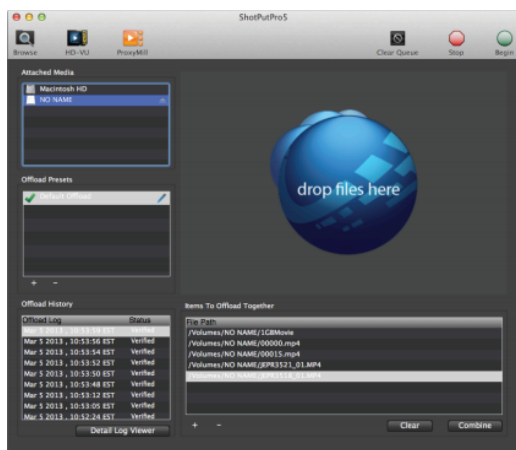




ShotPut Pro™ for Mac

Automated Offloading for HD Digital Media

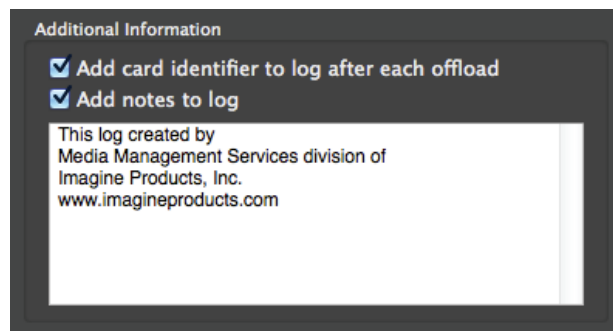
From Imagine Products Inc.



Offload any digital media card or disk recorder including:

- Arri
- Canon
- CF Cards
- Convergent
- G-Tech
- JVC Pro HD
- Panasonic
- RED
- SDHC cards
- SONY

Automatically add your contact information to each offload report.



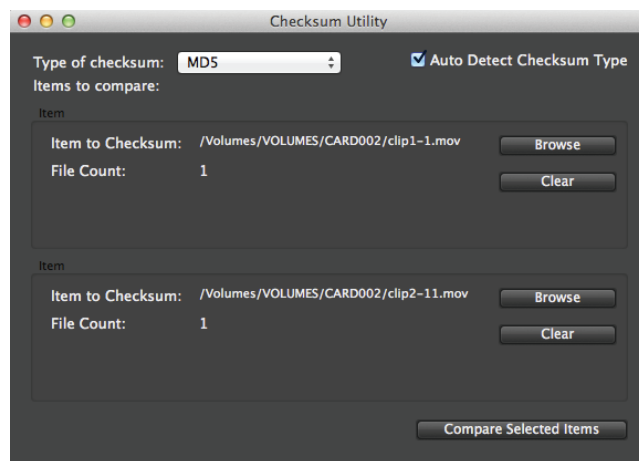
ShotPut Pro is designed to work in conjunction with ProxyMill and HD-VU. Simultaneously make proxy copies, and Instantly preview clips in original form.



Drop any file any time onto the Checksum Utility to verify the MD5.

Verify MD5 Checksums to ensure they exactly match the originals.

- MD5 Checksum
- SHA 256 Checksum
- SHA 512 Checksum
- CRC32 Checksum
- File Size
- No Verification



For OSX



Imagine Products Inc. | Indianapolis, Indiana
sales@imagineproducts.com

2013 © Imagine Products, Inc.

Subject to change without notice

www.imagineproducts.com



Why Use ShotPut Pro?

ShotPut Pro for Macintosh is an automated copy utility application for HD video and photo files (e.g. Canon, Panasonic, RED, Sony, etc.). It makes secure, auto-named copies of a card's contents, entire hard disks or selected files to multiple locations simultaneously. All copies are verified.

HD Digital Video Media: ShotPut Pro offloads ANY media type including ARRI, Canon, P2, AVCHD, SxS, RED and others.

Digital Still Media: ShotPut Pro even offloads still image files from SxS cards including RAW, JPEG, TIFF and others.

Offload Preview: Preview contents of all items in an offload.

Offload Progress: View individual progress bars for copy and verifications.

Entire Cards or Disks: At a glance, the contents of any mountable volume (card or drive) can be copied.

Copy Folders or Files: Individually select just the material you want to backup and verify. Drag and Drop the list to process.

Fast Copying: ShotPut Pro reads the source files once, and uses multi-thread technology to copy multiple files to multiple destinations simultaneously for the fastest possible offloading. Fast media and connections with SSDs, USB3, eSATA, Thunderbolt may take advantage of larger Buffer Sizes.

Security: Compare your media copies to ensure they exactly match the originals. Checksum types included are SHA 256, 512, Sony SRSum aware, and .MD5 ARRI compliant. Compare or test the integrity of any files or folders at any time.

Verification Report: Create a printable record of file transfer activity, how the copies were named, time, date, etc. Save complete details for project organization or just summaries for billable time.

Offload Presets: Easily switch between naming schemes and output destinations with custom presets.

Automatic Process: Setup an auto-naming scheme and use the auto-offload mode to begin copying cards upon insertion.

Manual Process: Select from a list of removable drives, or Drag and Drop individual files or folders into the processing window.

Easy Folder Naming: Improve consistency and organization by letting ShotPut Pro auto-name copy folders. Select from various custom naming conventions such as card name, time/date information, project name with auto-numbering, etc. With offload preset organization individualized naming and output destinations are available.

Offload History: Allows browsing and export of multiple session logs at any time!

Offload Bundling: Group files or folders into one offload item/folder.

Reformat Cards: After offloading is finished, let ShotPut Pro automatically erase the card (not just as a post-offload activity) so it's ready to return to the camera.

Error Checking: Eliminates human errors. Prevents accidental overwriting of existing folders.

ShotPutPro at a Glance

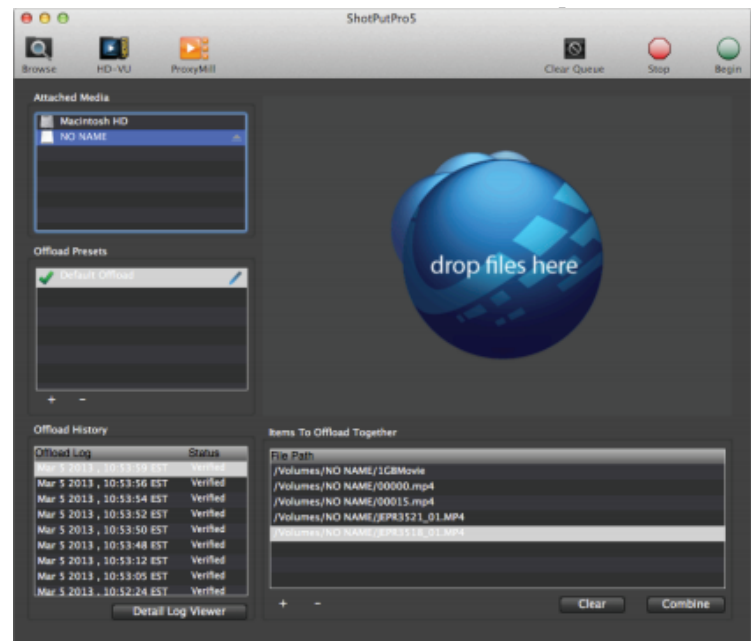
ShotPut Pro is the industry's de-facto standard offloading application for professionals. It's simple user interface and robust copy speeds make it indispensable for today's tapeless HD workflows.

Whether you're copying just one card or five at a time, to one or more portable hard disks at a time, with ShotPut Pro you can 'Offload with Confidence'. Minimize your data wrangling time; maximize your creative time.

File Verification

Video and photo files are highly valued. For that reason, ShotPut Pro includes file verification to ensure your media is properly copied before the card containing original material is erased.

ShotPut Pro offers several verification methods including: MD5, CRC, and SHA.



Free Demo Available!

www.imagineproducts.com

Minimum Computer Requirements

IntelMac

1 GB of RAM | 1 GB Free disk space

Web access for registration

OSX 10.8, 10.7, 10.6 (64-bit)

Imagine Products Inc. | Indianapolis, Indiana
sales@imagineproducts.com

2013 © Imagine Products, Inc.

Subject to change without notice

